

Risiko for død og sekundær cancer hos patienter behandlet for testikelcancer

MG Kier^{1,2}, J Lauritsen¹, MK Hansen², KK Andersen², M Bandak¹, MS Mortensen¹,
M Agerbaek³, NV Holm⁴, SO Dalton², C Johansen^{1,2}, G Daugaard¹

¹Onkologisk Afd., Rigshospitalet; ²Kræftens Bekæmpelse; ³Onkologisk Afd., Århus Universitetshospital;
⁴Onkologisk Afd., Odense Universitetshospital



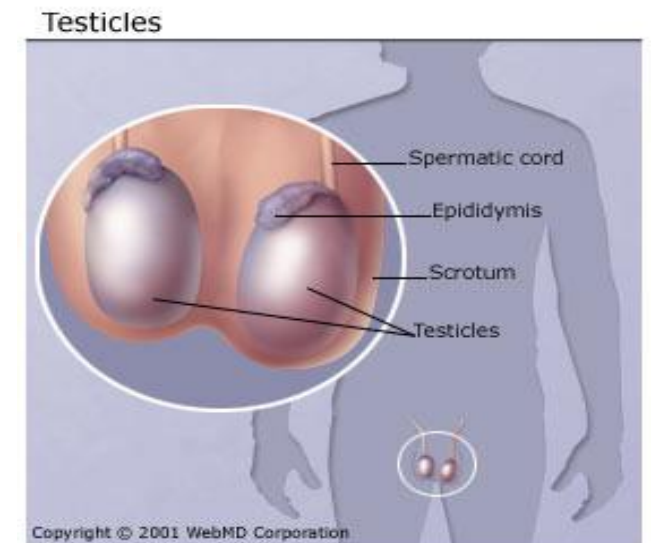
Rigshospitalet



Danish Cancer Society

Formål med studiet

- Risiko for sekundær cancer og død
 - Relateret til behandling
 - Sammenholdt med en kontrolgruppe
- Død af andre årsager



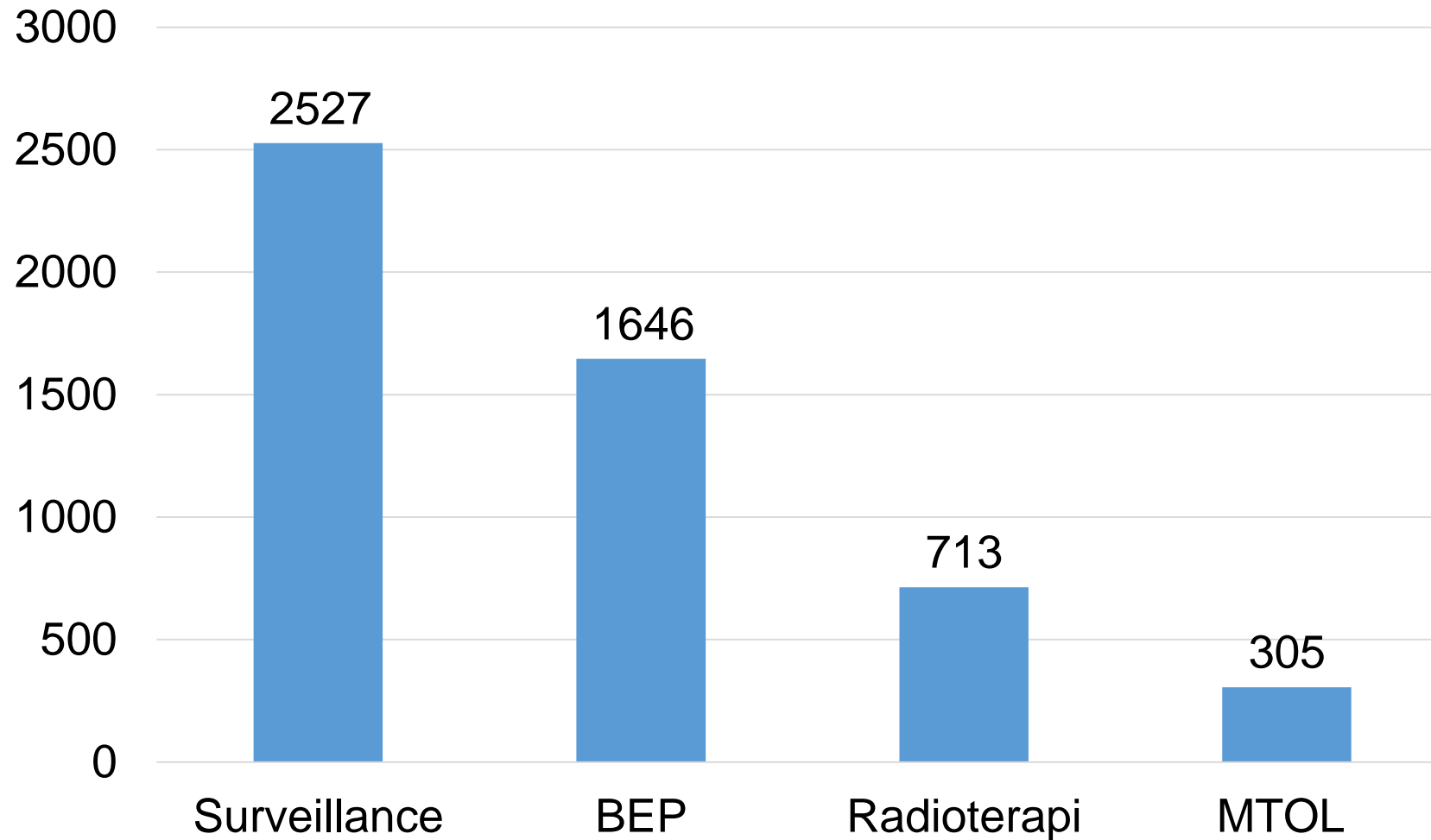
Journaler
Patologi
rapporter



5500 patienter
1984-2007

Nationale
registre

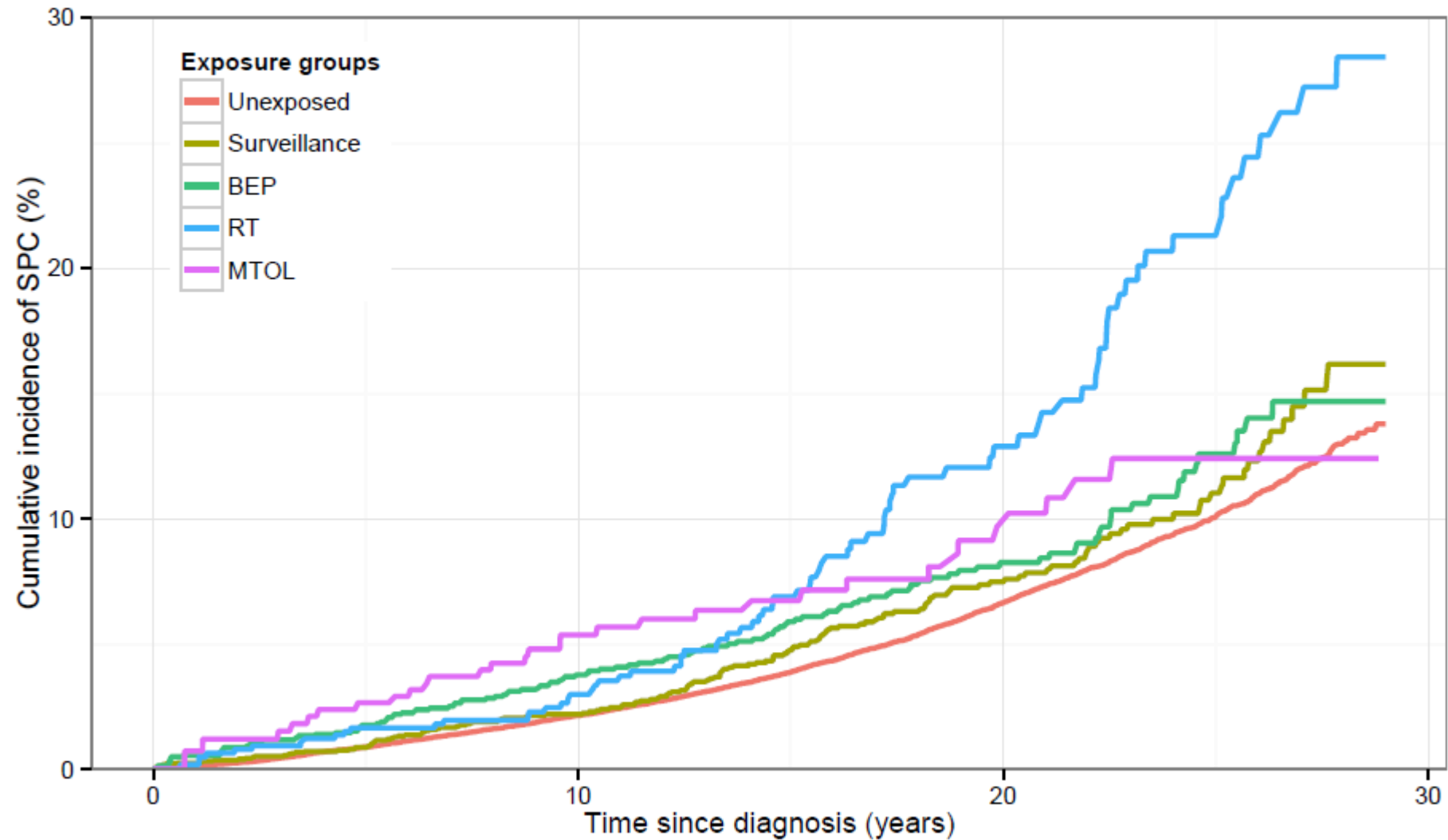
Behandlingsgrupper



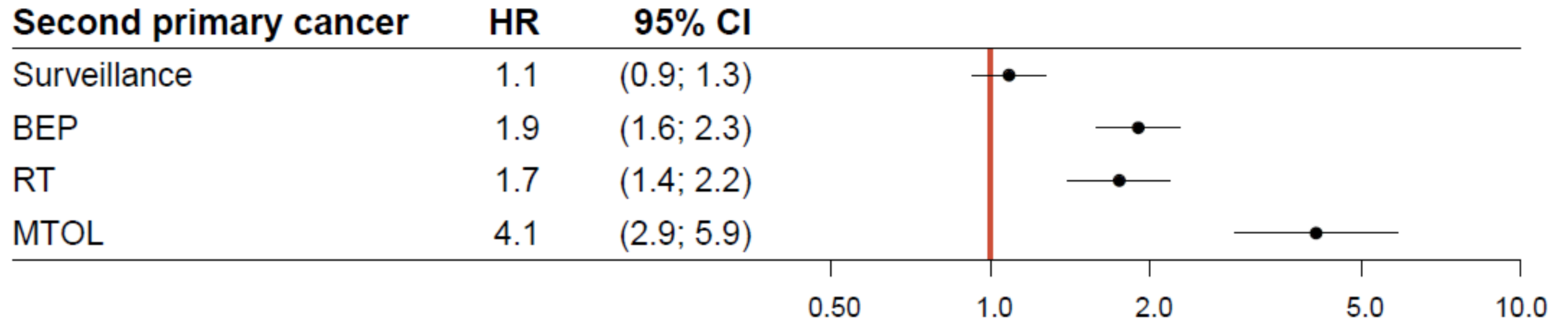
Patient karakteristika

- Alder, median: 34 år
- Follow up, median: 15 år
- Dødsfald: n=684 patienter
- Sekundær cancer: n=394 patienter
- Tid til sekundær cancer, median: 14 år

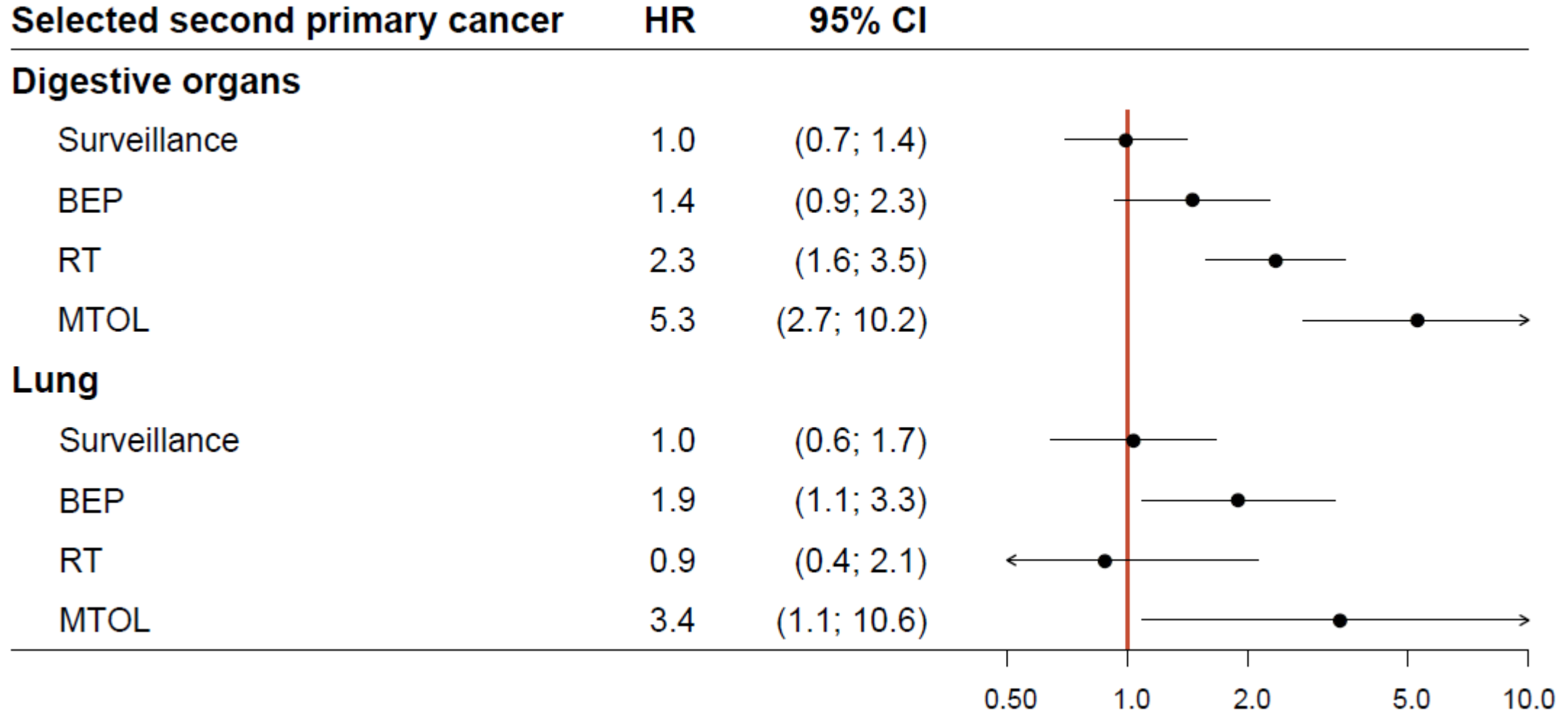
Kumuleret incidens af sekundær cancer



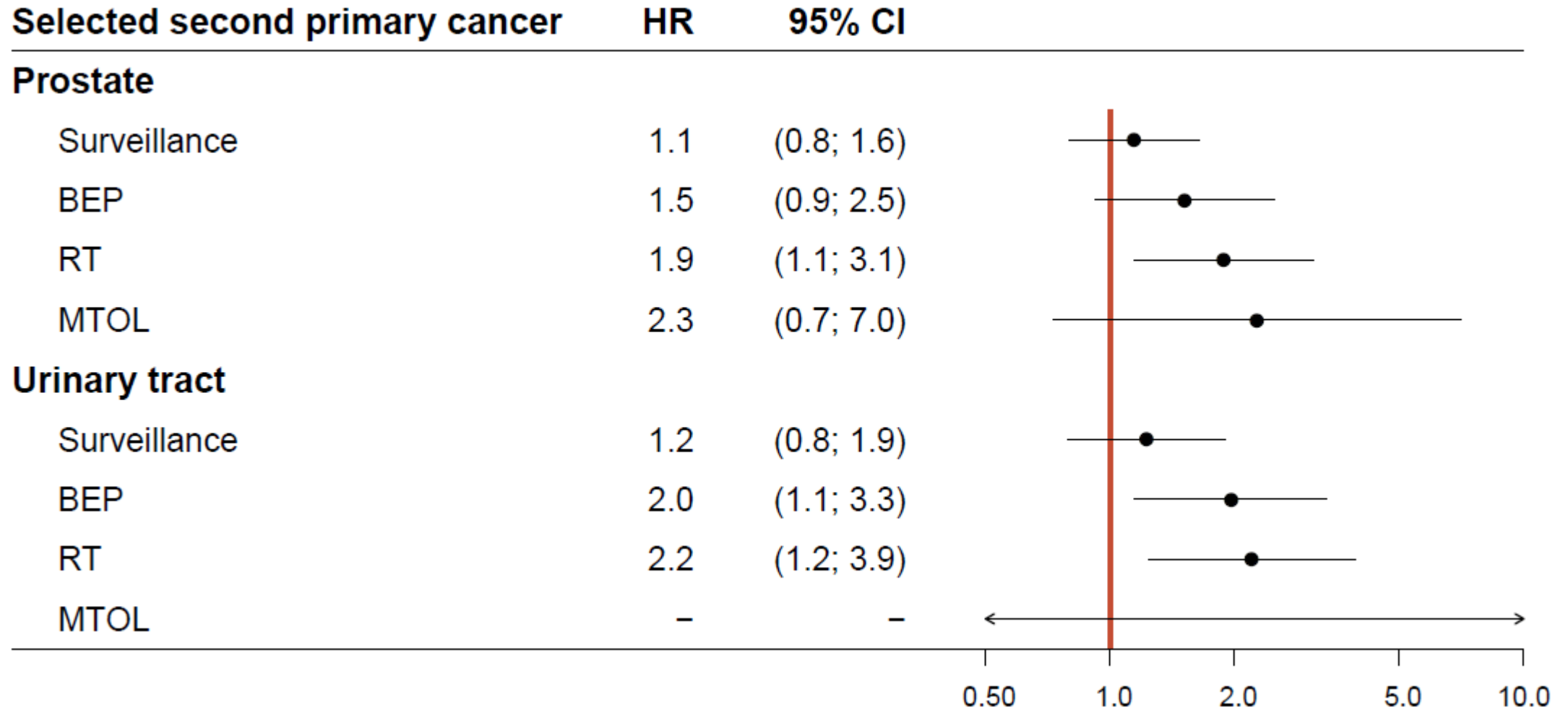
Multivariabel model



Multivariabel model



Multivariabel model

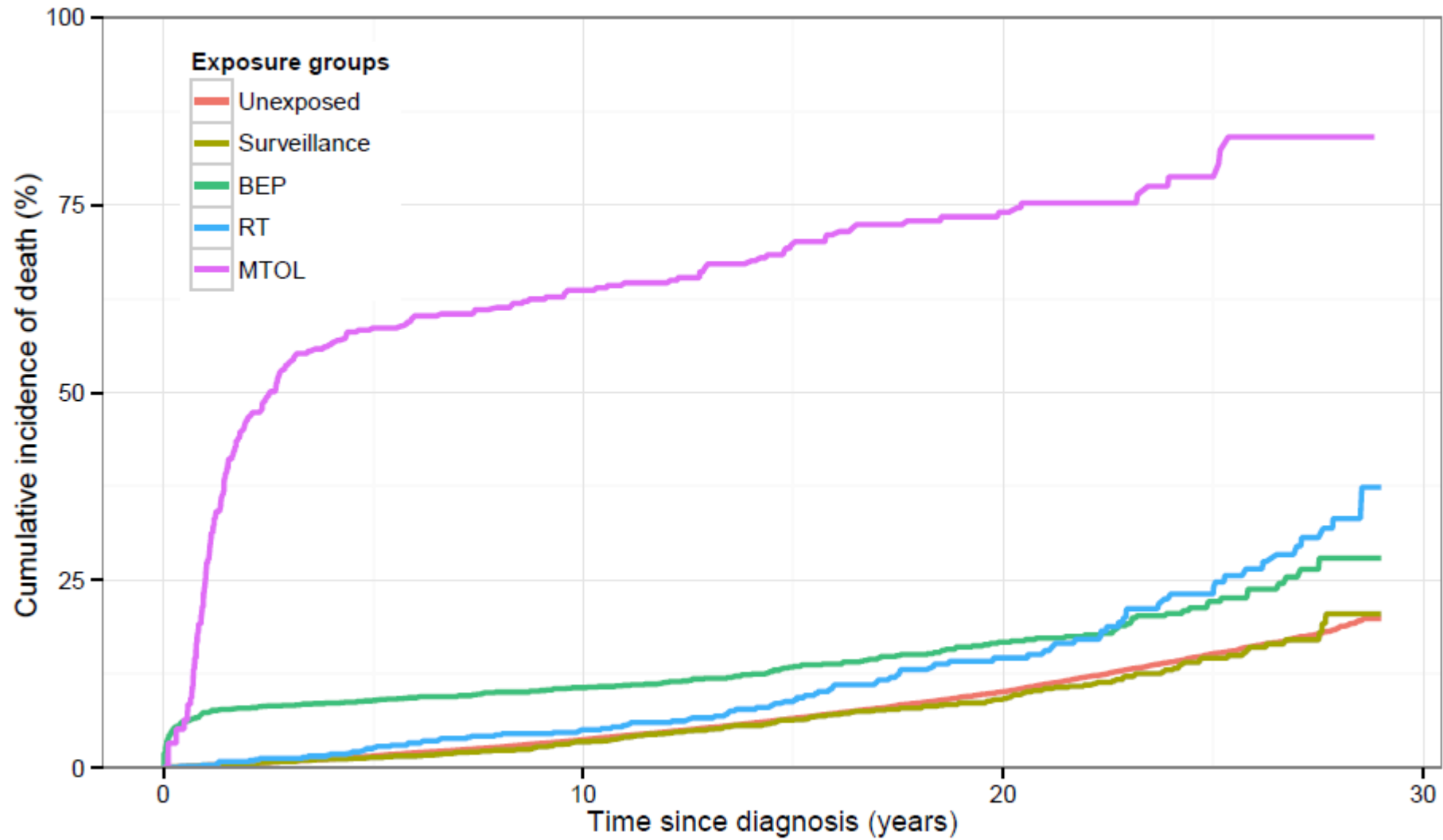


Risiko for sekundær cancer?

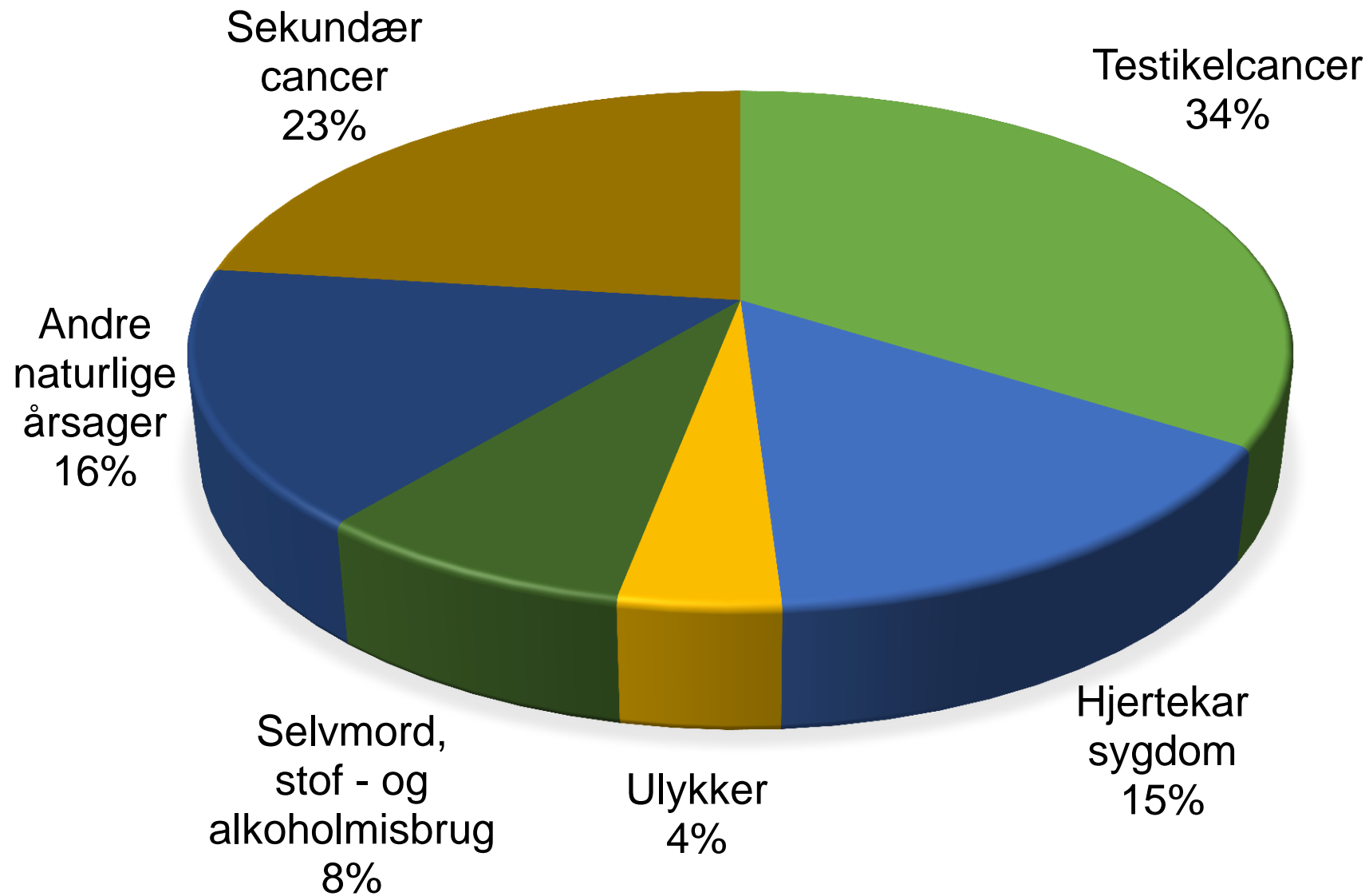
- Cancer i CNS
- Malignt melanom
- Hæmatologisk cancer



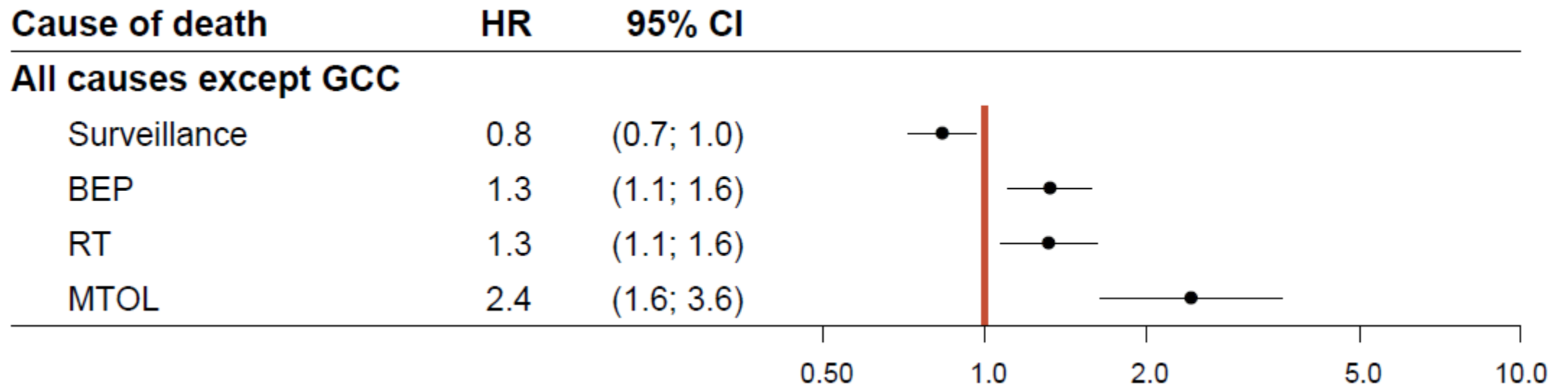
Kumuleret incidens af død



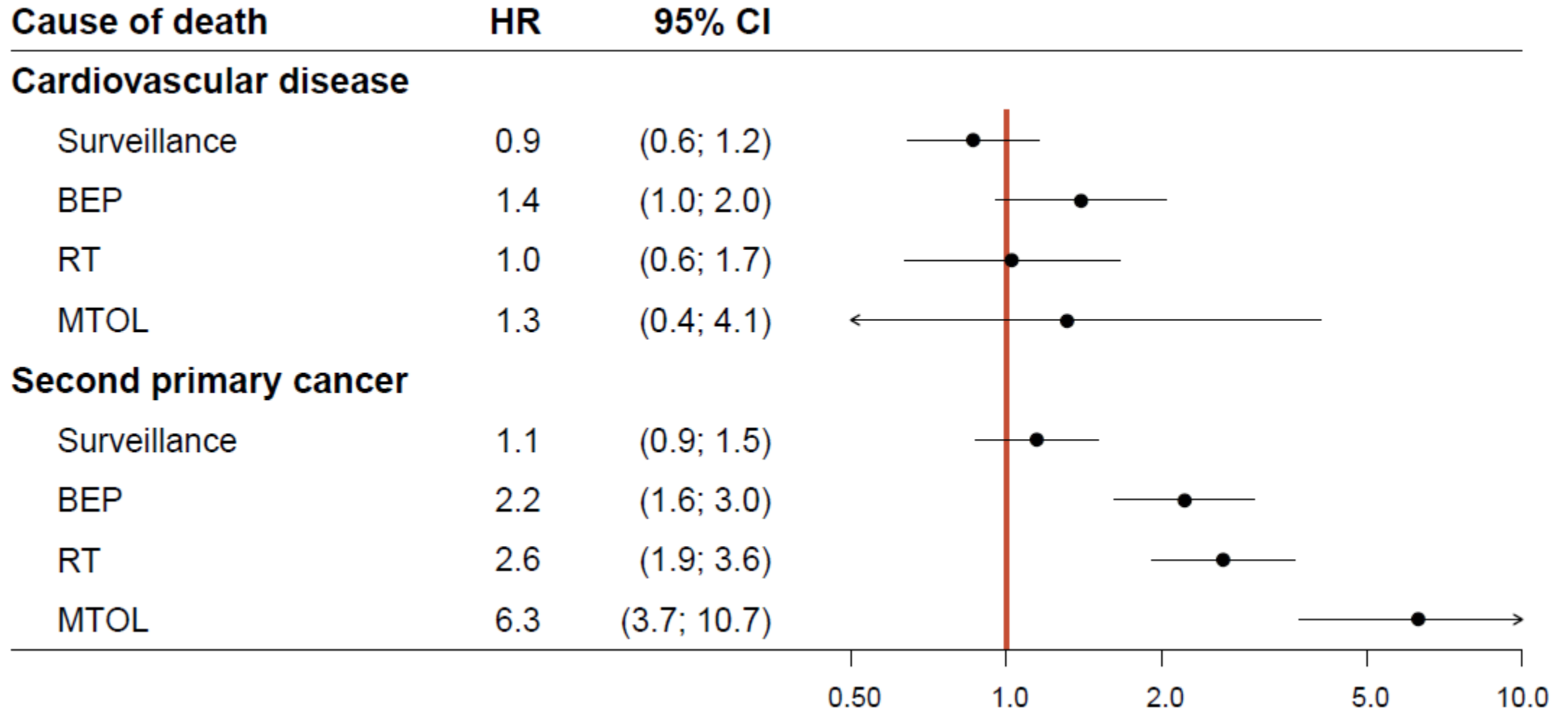
Dødsårsager









Multivariabel model



Multivariabel model



Konklusion

	Risiko for sekundær cancer og død		
Surveillance		NEJ	
BEP		Lunge, urinveje	
RT		GI-kanal, urinveje, prostata	
MTOL		Lunge, GI-kanal	